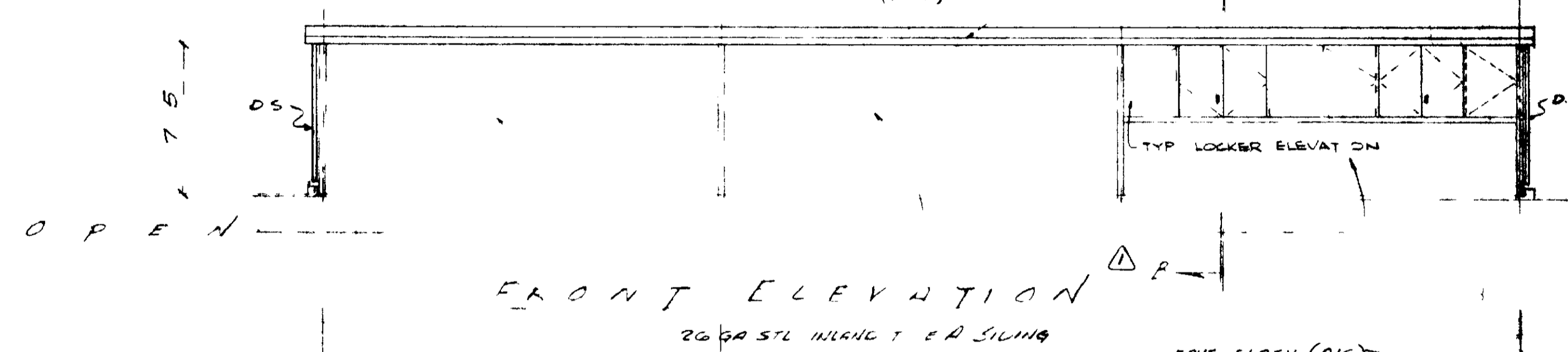
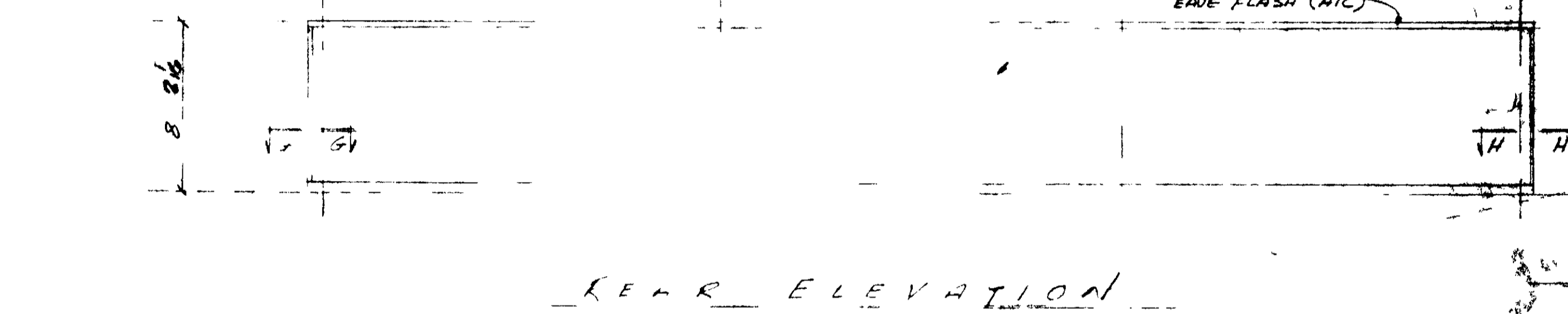


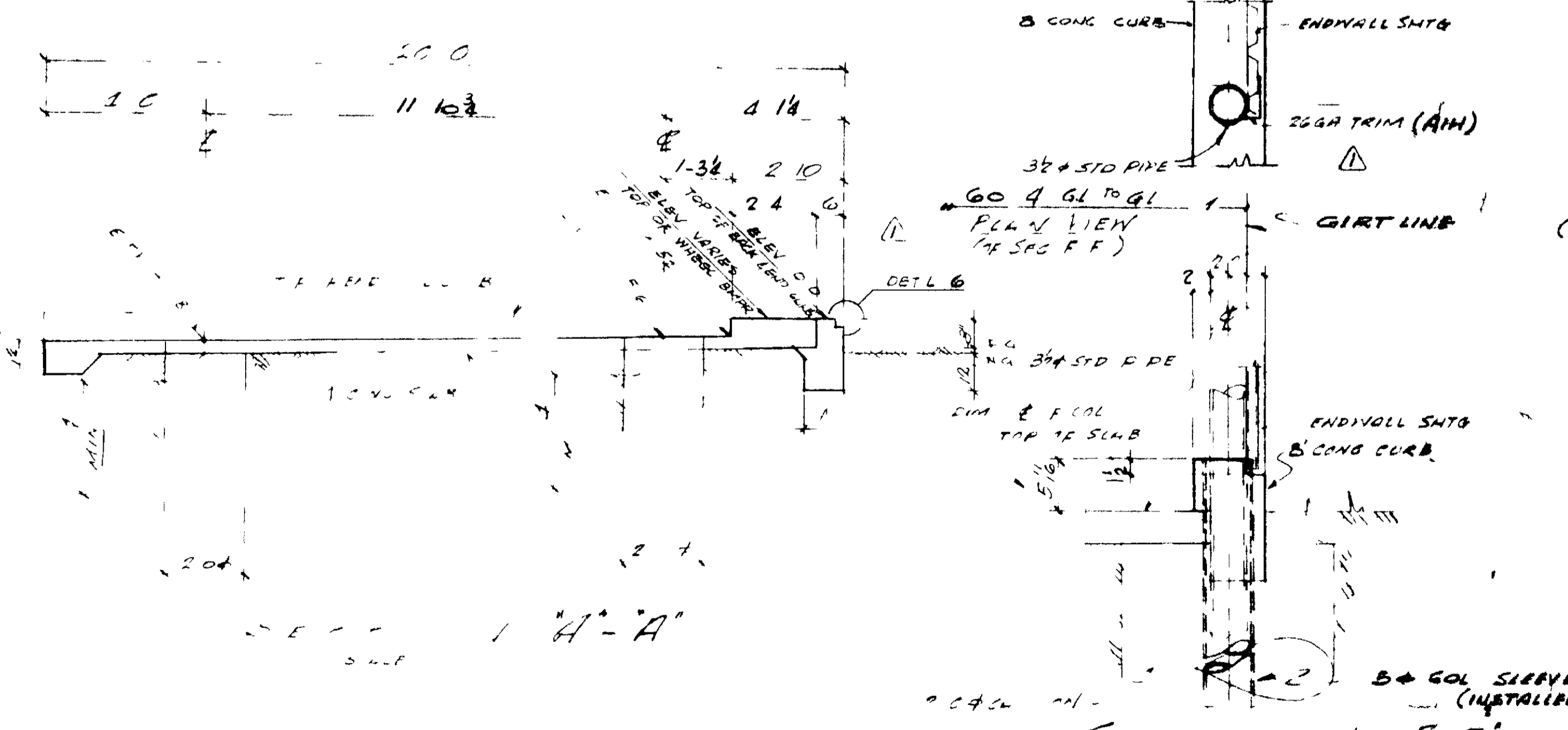
FLOOR PLAN



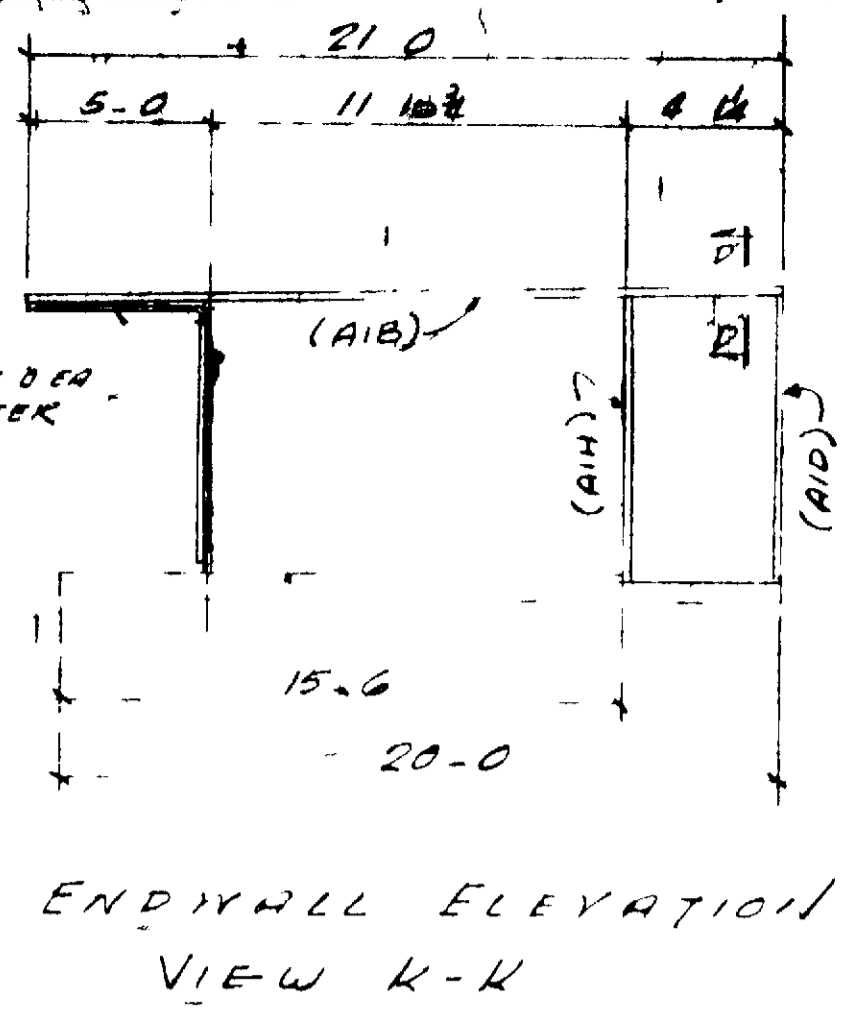
FRONT ELEVATION



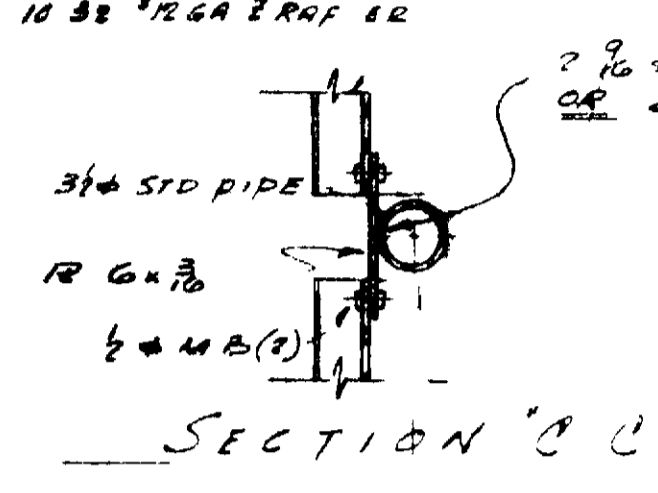
REAR ELEVATION



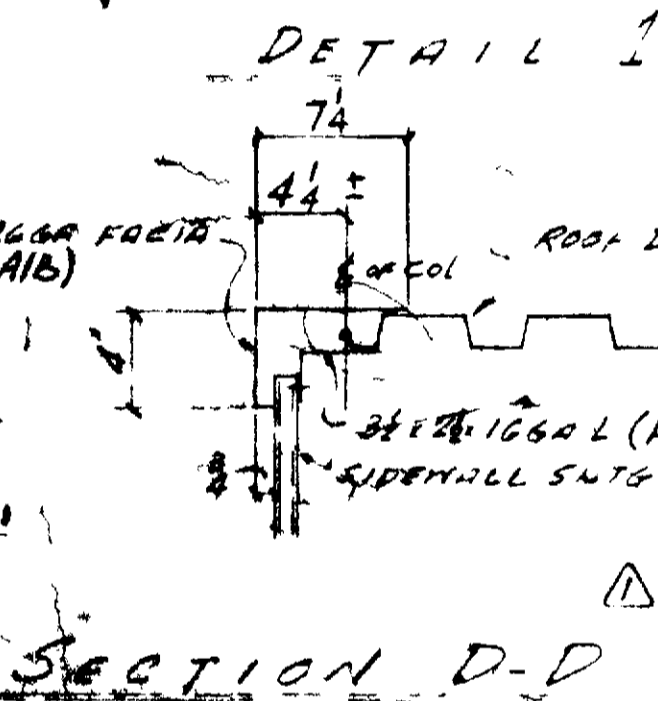
SECTION A-A
(TYPICAL @ SIDEWALL)



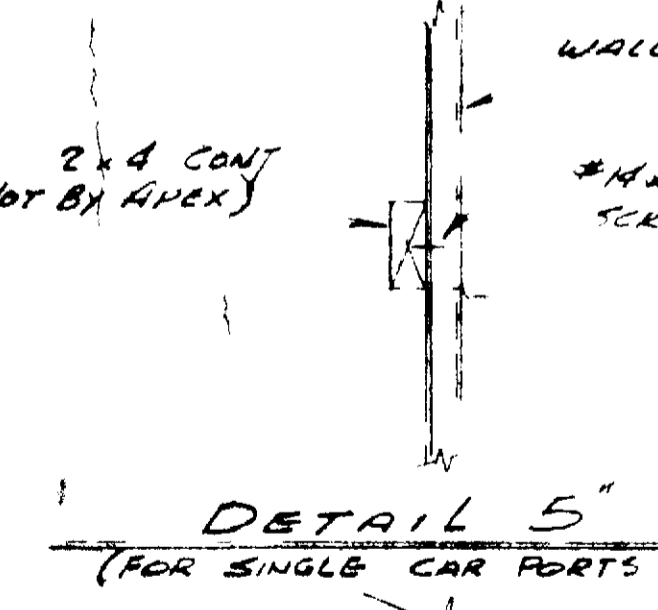
ENDWALL ELEVATION
VIEW K-K



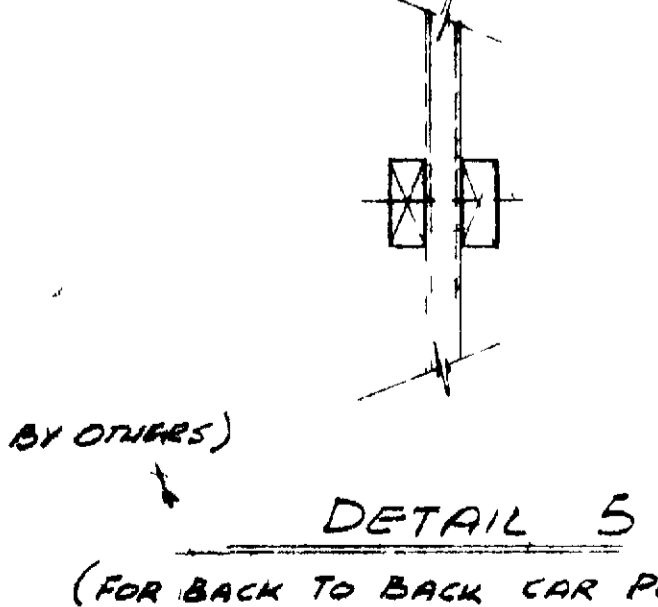
SECTION B-B



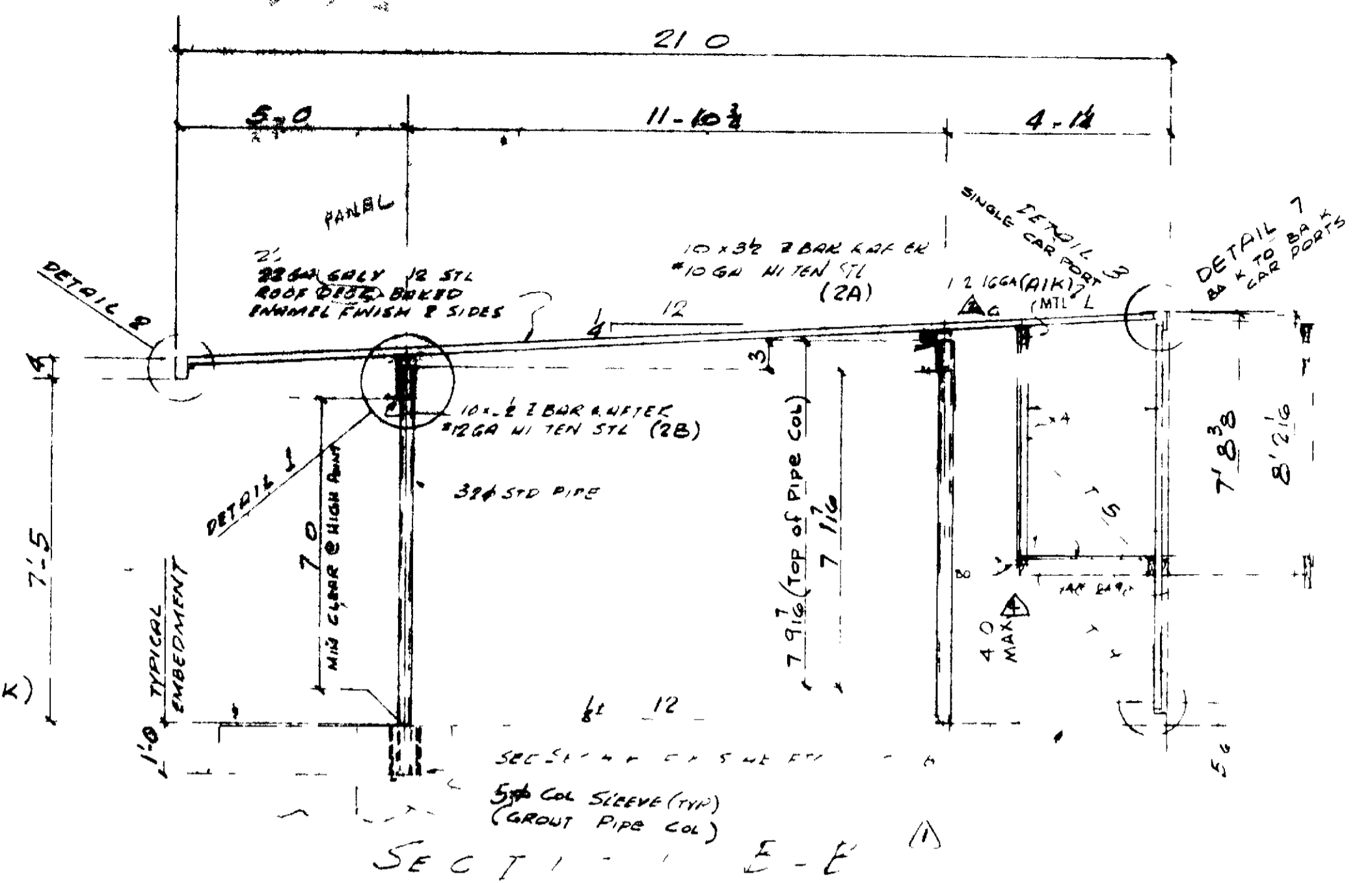
SECTION D-D



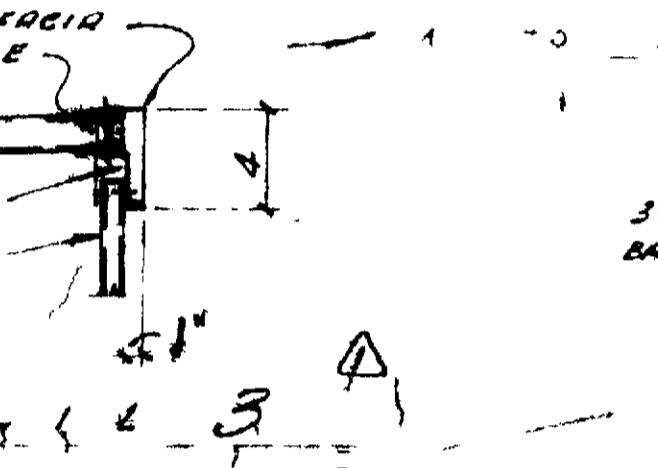
SECTION G-G (AS SHOWN)



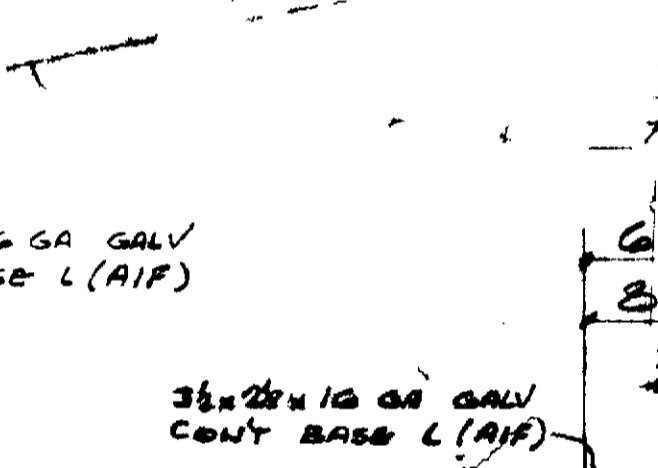
SECTION H-H (OPP HAND)



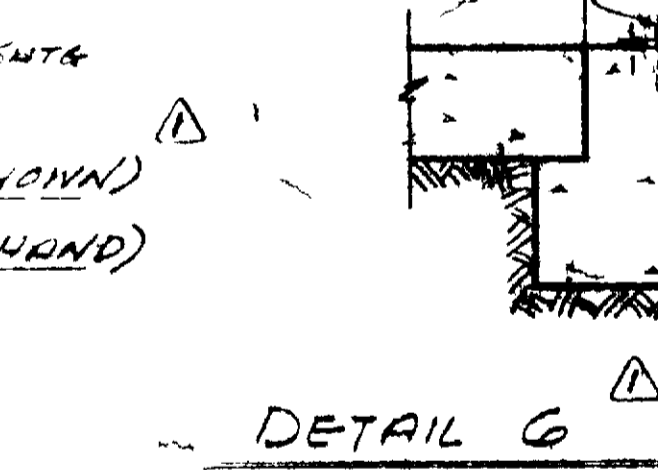
SECTION E-E



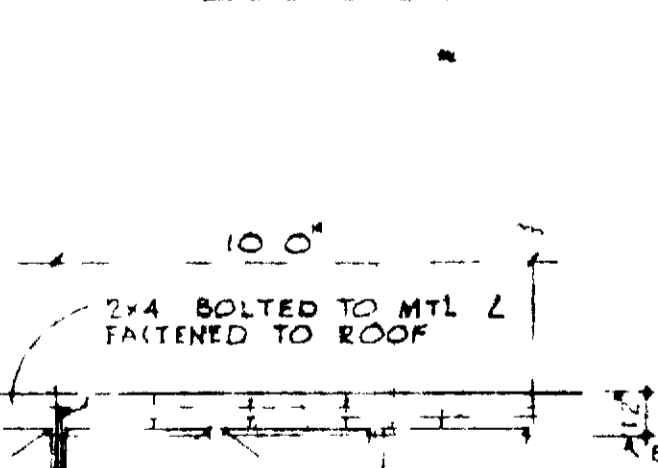
DETAIL 1



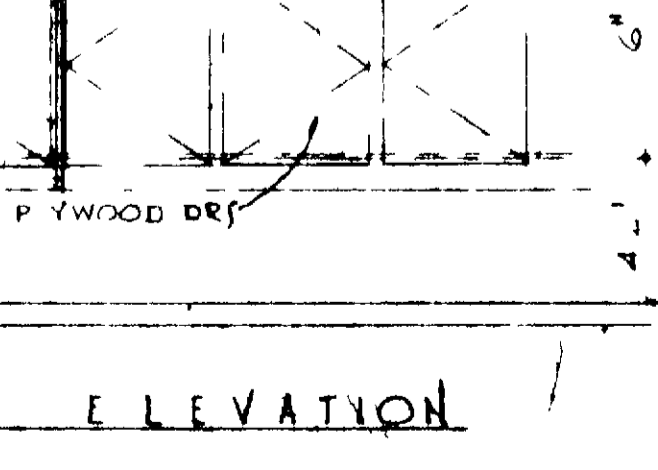
DETAIL 2



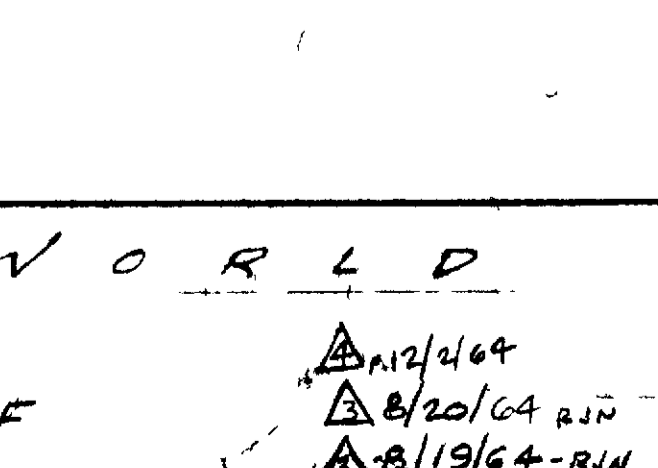
DETAIL 3



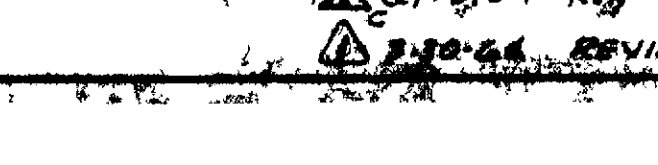
DETAIL 4



DETAIL 5



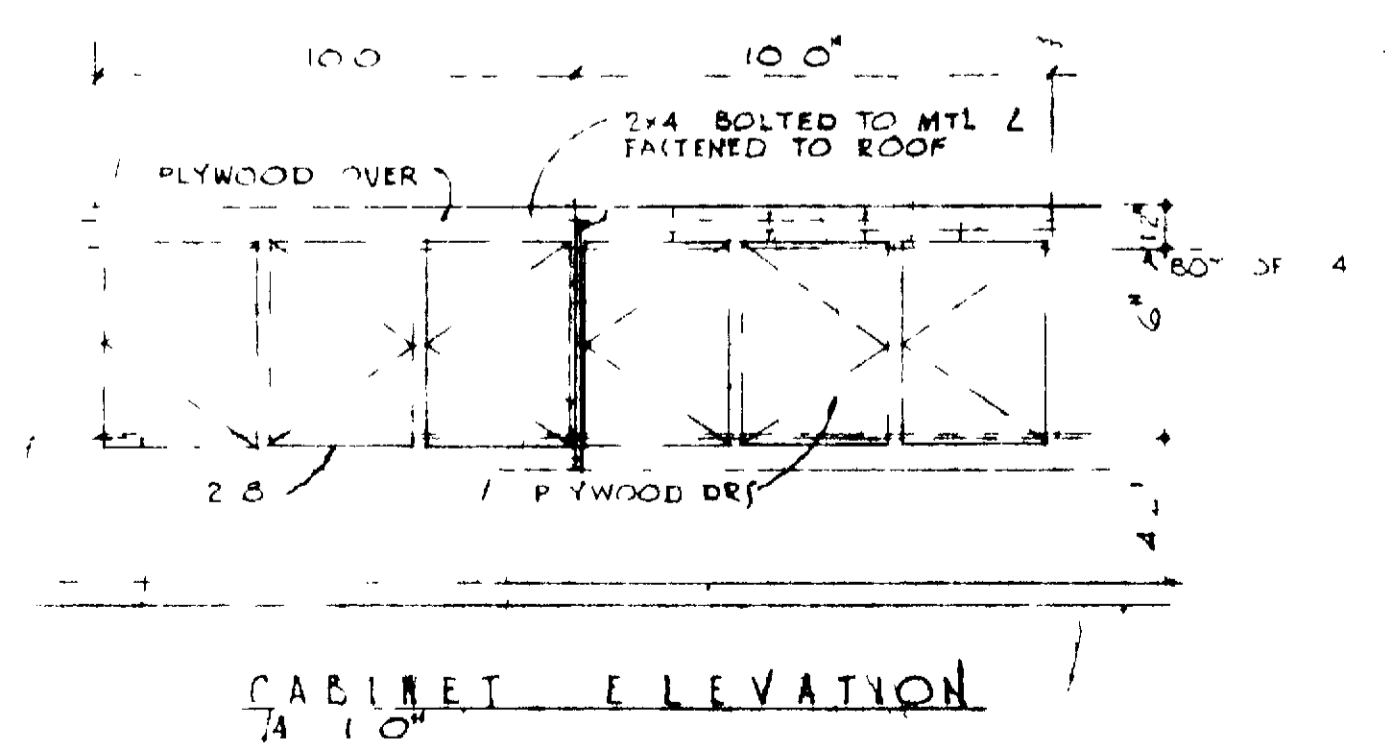
DETAIL 6



DETAIL 7

GENERAL NOTES

- UNLESS OTHERWISE SPECIFIED, ALL MATERIALS SHALL BE AS SHOWN ON DRAWING.
- PIPE COLLARS SHALL BE INSTALLED IN ACCORDANCE WITH THE LATEST AISC SPECIFICATION.
- WELDS SHALL BE MADE IN ACCORDANCE WITH THE LATEST AISC SPECIFICATION.
- ALL WELDS SHALL BE MADE BY A LICENSED WELDER.
- ALL DIMENSIONS SHALL BE TO FACE UNLESS OTHERWISE SPECIFIED.
- ALL MATERIALS SHALL BE APPROVED BY THE ARCHITECT.
- ALL MATERIALS SHALL BE INSTALLED IN ACCORDANCE WITH THE MANUFACTURER'S INSTRUCTIONS.
- ALL MATERIALS SHALL BE INSTALLED IN ACCORDANCE WITH THE MANUFACTURER'S INSTRUCTIONS.
- ALL MATERIALS SHALL BE INSTALLED IN ACCORDANCE WITH THE MANUFACTURER'S INSTRUCTIONS.
- ALL MATERIALS SHALL BE INSTALLED IN ACCORDANCE WITH THE MANUFACTURER'S INSTRUCTIONS.



CABINET ELEVATION

RESTRICTIVE NOTICE—ARCHITECTURAL DRAWINGS
 THE INFORMATION, PLANS, SPECIFICATIONS AND DESIGNS CONTAINED IN THIS DRAWING ARE CONFIDENTIAL. THE RECIPIENT ACKNOWLEDGES THAT THE DRAWING AND ITS CONTENTS ARE THE PROPERTY OF ROSS W. CORTESE AND THAT THEY SHALL NOT BE DISCLOSED TO OTHERS, USED OR REPRODUCED IN WHOLE OR IN PART FOR ANY PURPOSE WITHOUT THE PRIOR WRITTEN CONSENT OF ROSS W. CORTESE.
 © Copyright by ROSS W. CORTESE All Rights Reserved.

ROSS W. CORTESE
 ARCHITECT
 1500 N. GARDEN ST. #100
 ANAHEIM, CALIF. 92805
 (714) 777-7776
 FAX (714) 777-7776
 FOR MORE STRENGTH AND
 DURABILITY, SEE SPECIFICATIONS
 LOS ANGELES, CALIF.

ROSS W. CORTESE ARCHITECT
 LEISURE WORLD
 G UNIT SHOPPING
 ORANGE COUNTY, CALIF.

DATE: 8/20/64
 BY: RJC
 REVISION: 8/19/64-RJC
 8/18/64

CARPORT

DATE: 8/20/64
 BY: RJC
 REVISION: 8/19/64-RJC
 8/18/64

16 SHEET